

# SOLTEQ

Tekoälyllä ja robotiikalla kilpailukykyä vähittäiskaupan tarpeisiin

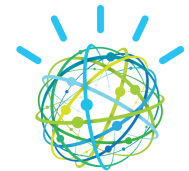
14.11.2018

# Solteq Incubator-team

Solteq Incubator team created to help customers to take right steps toward future.

Team skillset: Artificial Intelligence, Machine Vision, Machine Learning, AI Robotics, Augmented Reality and Blockchain

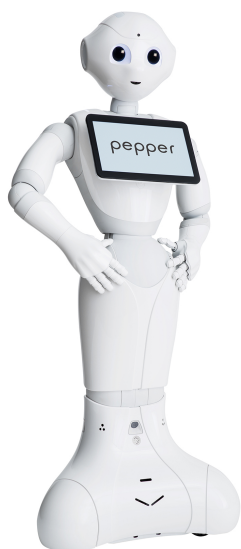
Technologies:



# Solteq Incubator products

---

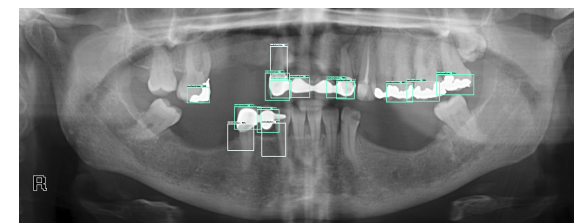
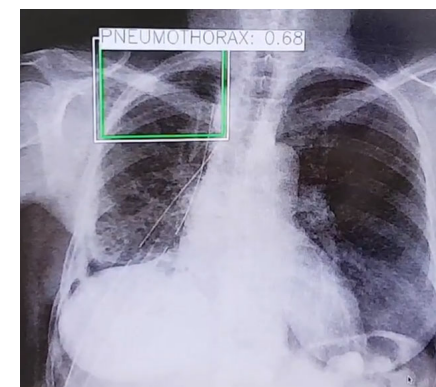
**Pepper**



**Retail Robot**



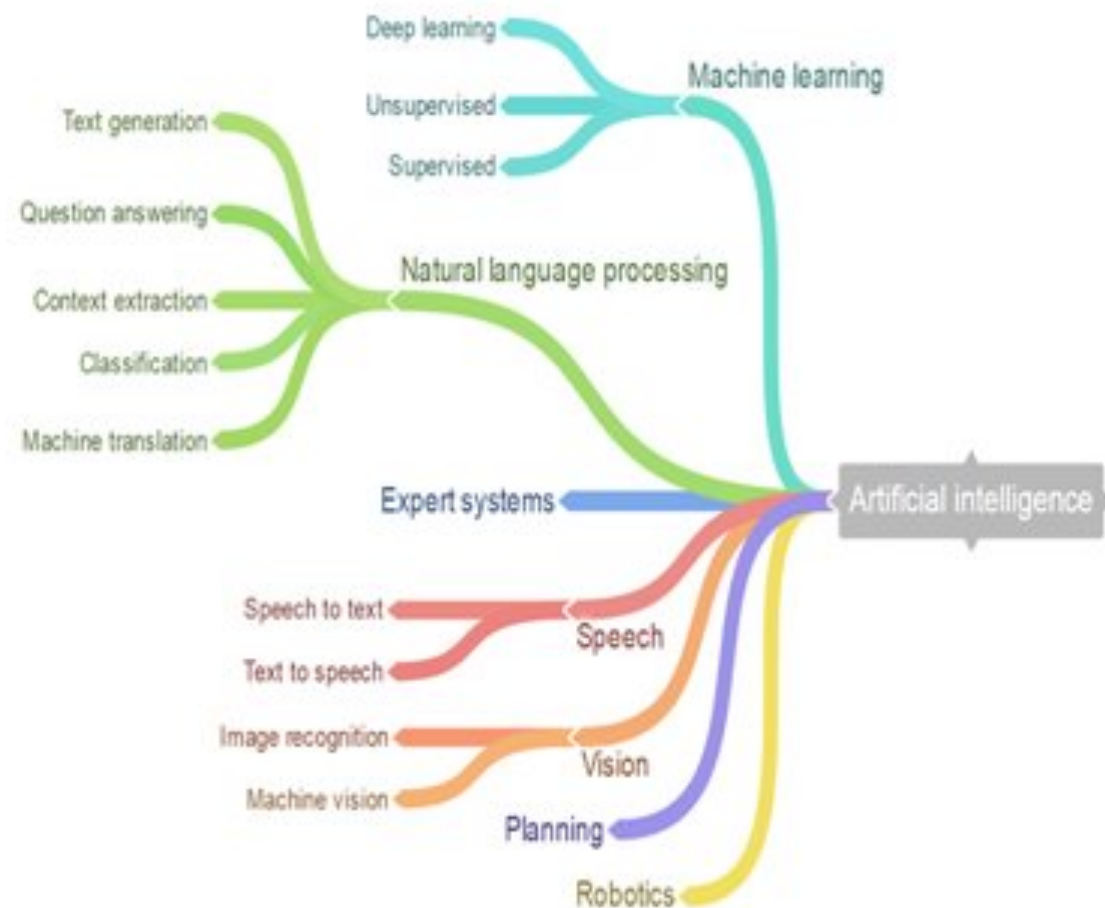
**GICCA**



---

# Your use case done with AI

---



# Pepper service robot

- Pepper is a humanoid robot which excels at human-like behavior and service.
- Developed and manufactured by Softbank Robotics. Solteq is an official partner and has certified developers.
- Face recognition, synthesizes human speech, agile 360 degree movement, integrating with customers services

## Cases:

- [Service Robot](#)
- [Hospital](#)
- [Exhibition / Event](#)



# Case example: Solteq Retail Robot

Solteq Retail Robot capabilities with Machine vision:

- 3D map from product locations
- 360 Modelling stores
- Check if price tag is correct
- Check if shelf is empty or not
- Check if product is in wrong place
- Autonomous navigation

<https://www.solteq.com/en/solutions/solteq-retail-robot>

Roadmap:

- 2018 H2 Pilots start
- First robots in production during 2019



# Kiitos

Timo Kupsa

Director, Incubator [timo.kupsa@solteq.com](mailto:timo.kupsa@solteq.com)